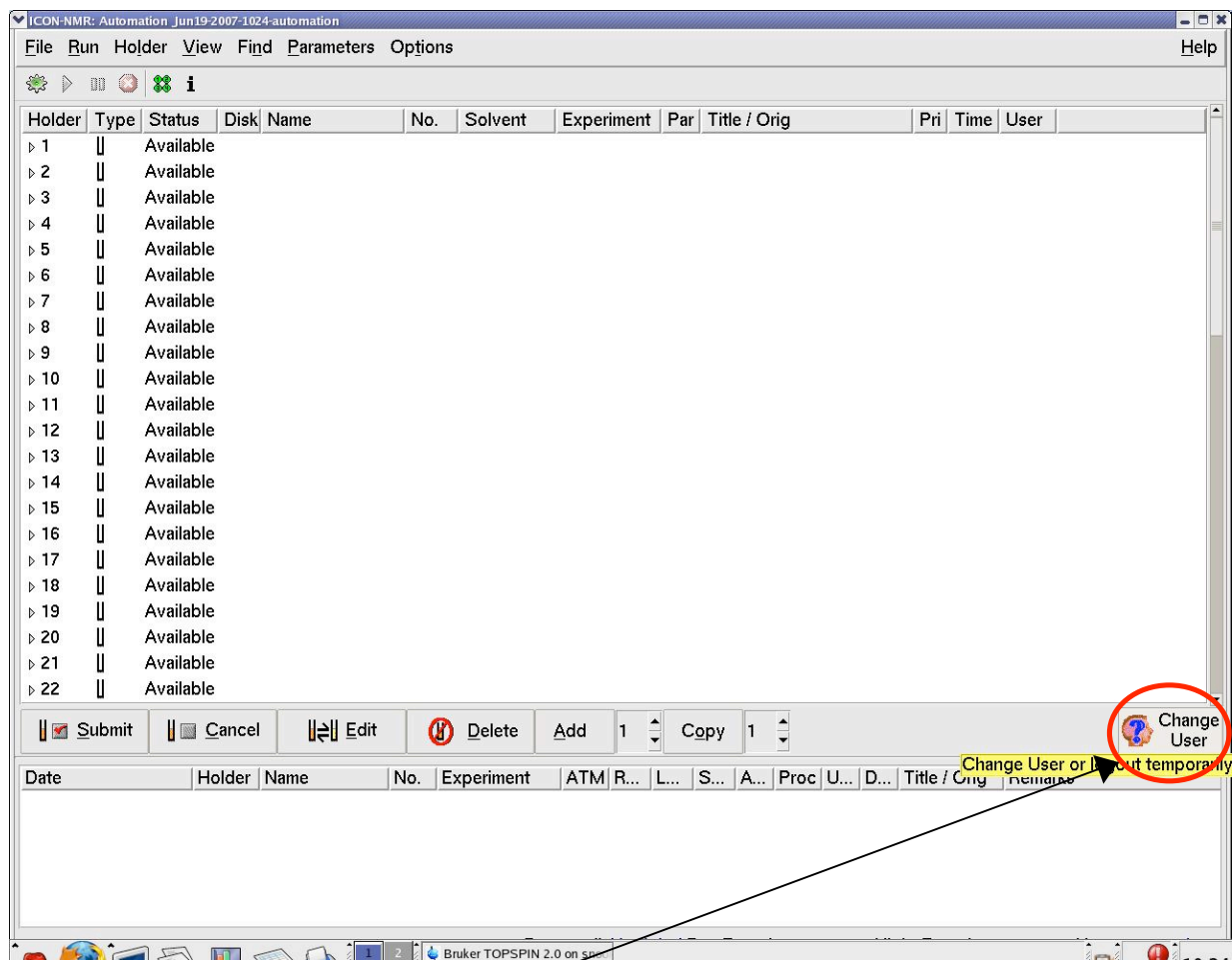


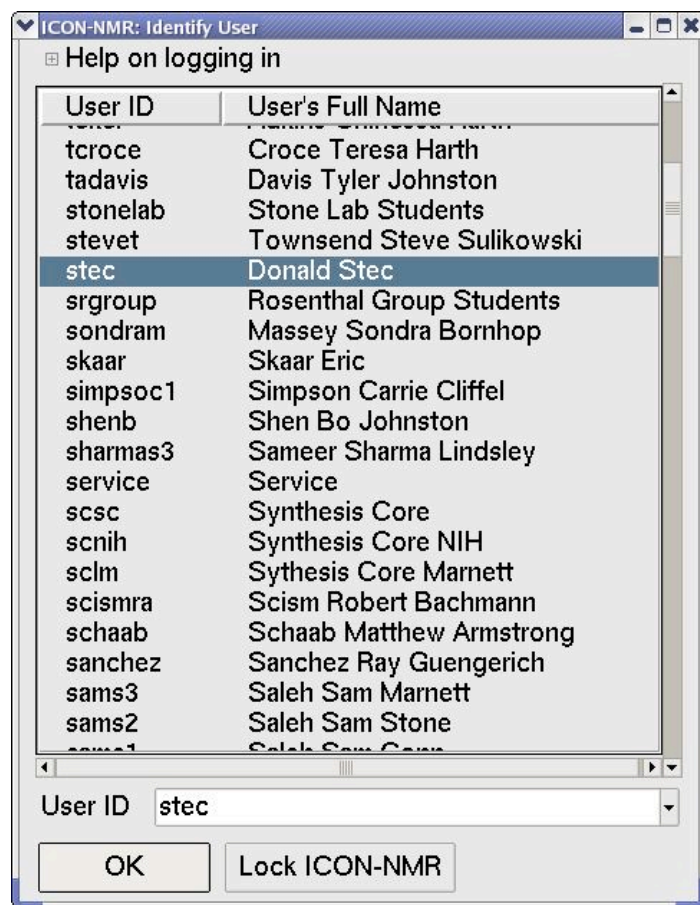
Vanderbilt Small Molecule NMR Center Instructions for Using Autosampler:

The following window should be present on the screen:



First, click on the “Change User” icon in order for the data to be stored in your directory

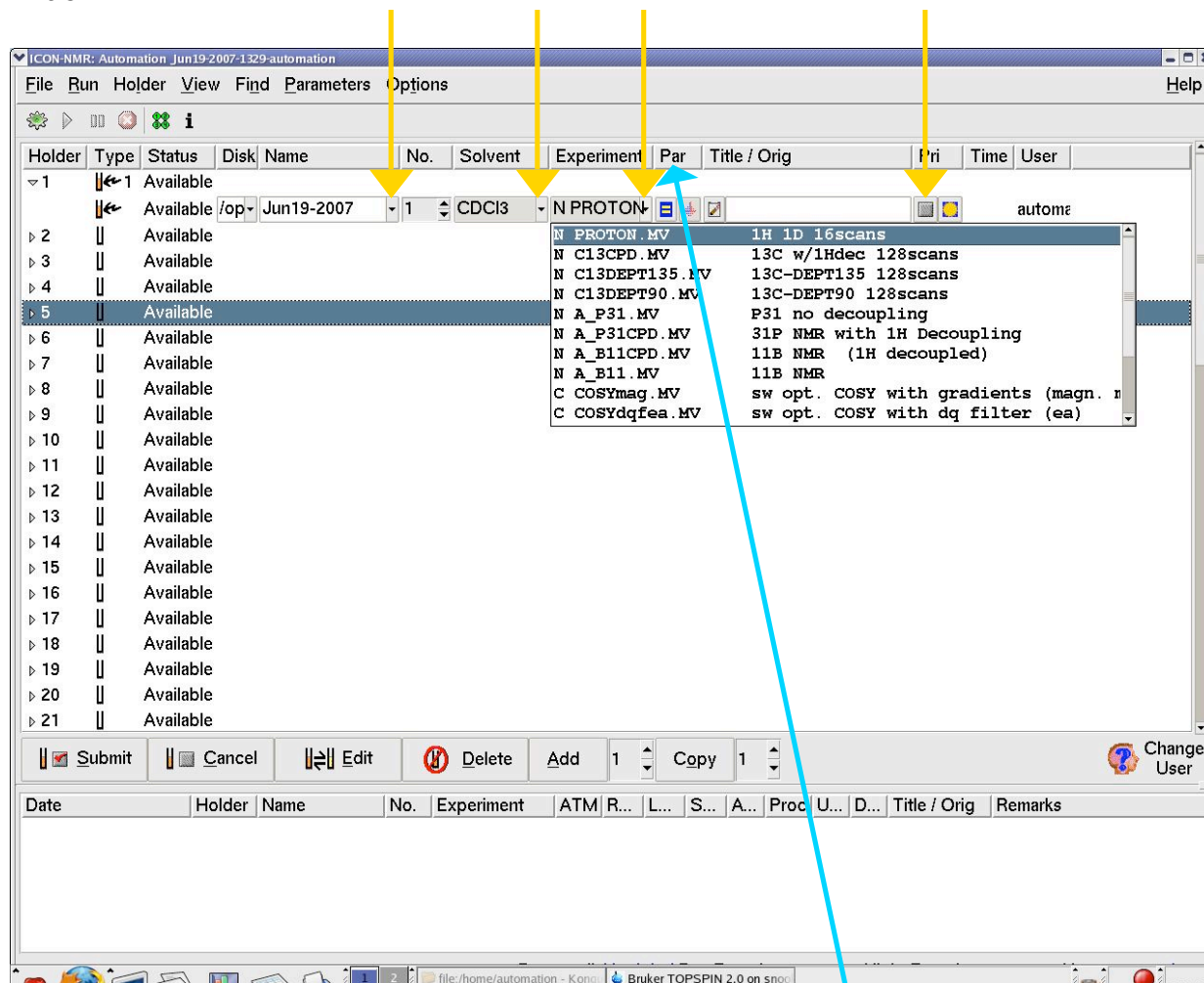
Once you click on this icon you need to select the proper user account:



After you select "OK" you will be prompted for your password

Once your password has been entered, select the line in the automation window that corresponds to where you will place your sample. It is recommended to use the next available position.

In the appropriate holder click on the arrow buttons under “Name”, “Solvent”, “Experiment” and “Title”

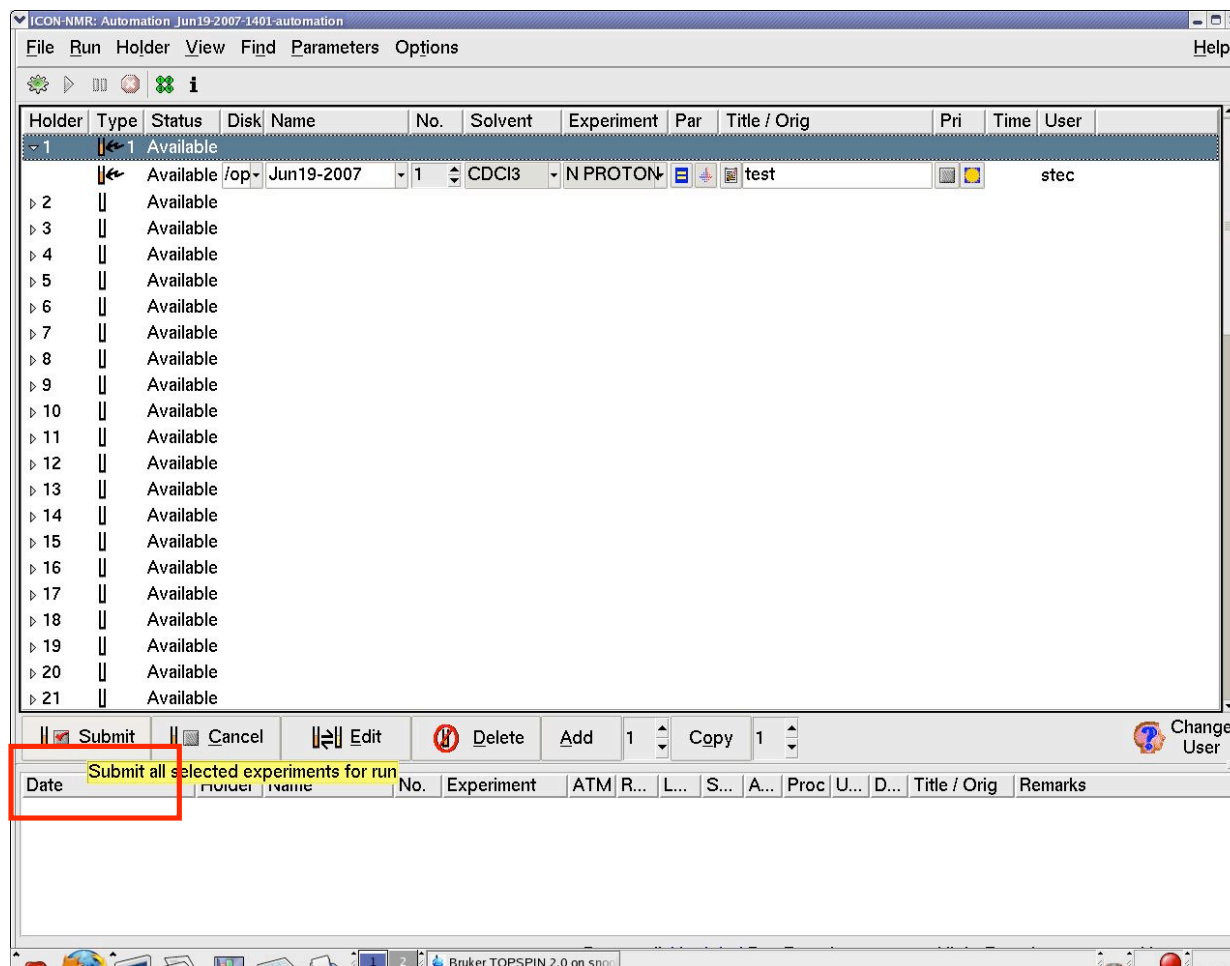


If you would like to change any of the default parameters (# of scans, recycle delay (d1), sweep width (sw), # of points (TD)) click on the parameter control button.

If you would like to add more than one experiment for a sample, simply right click on the holder number and select “add”

Once all the information is entered, make sure that the holder number is highlighted and click on the submit button. If yours is the first sample of the day, click on the start button after you select submit.

To submit multiple samples, hold down on the “Shift” key and click to highlight all the holder #'s that you need to submit and select “Submit”



You should receive email notification when you sample is complete.

PLEASE REMBER TO PICK UP YOUR SAMPLE ONCE IT IS FINISHED!!!!